
RingStor Enterprise Overview

RingStor Data Management

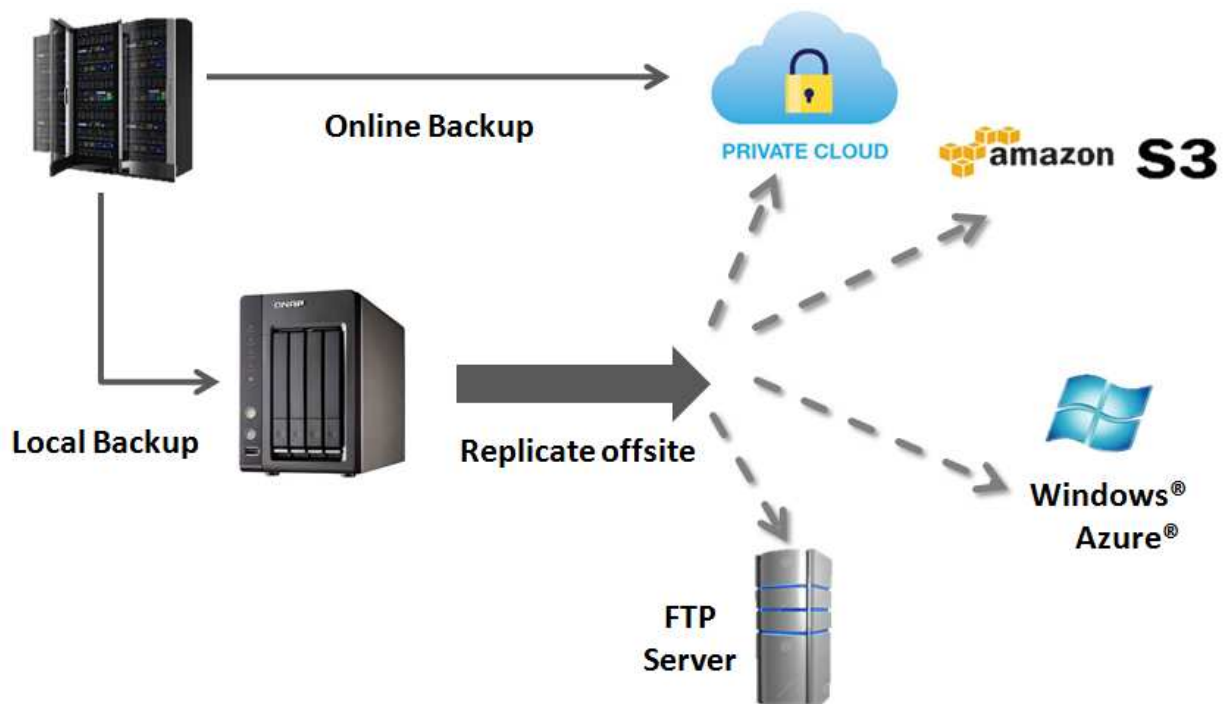
RingStor Enterprise software suite 3.0 comes with a cloud component and many data agents to support two data management features:

- Data backup and recover
- Data sync

Data Backup and Recover

RingStor Enterprise provides three different ways to backup the data: Online Backup Only, Local Backup Only and Local Backup with Replication.

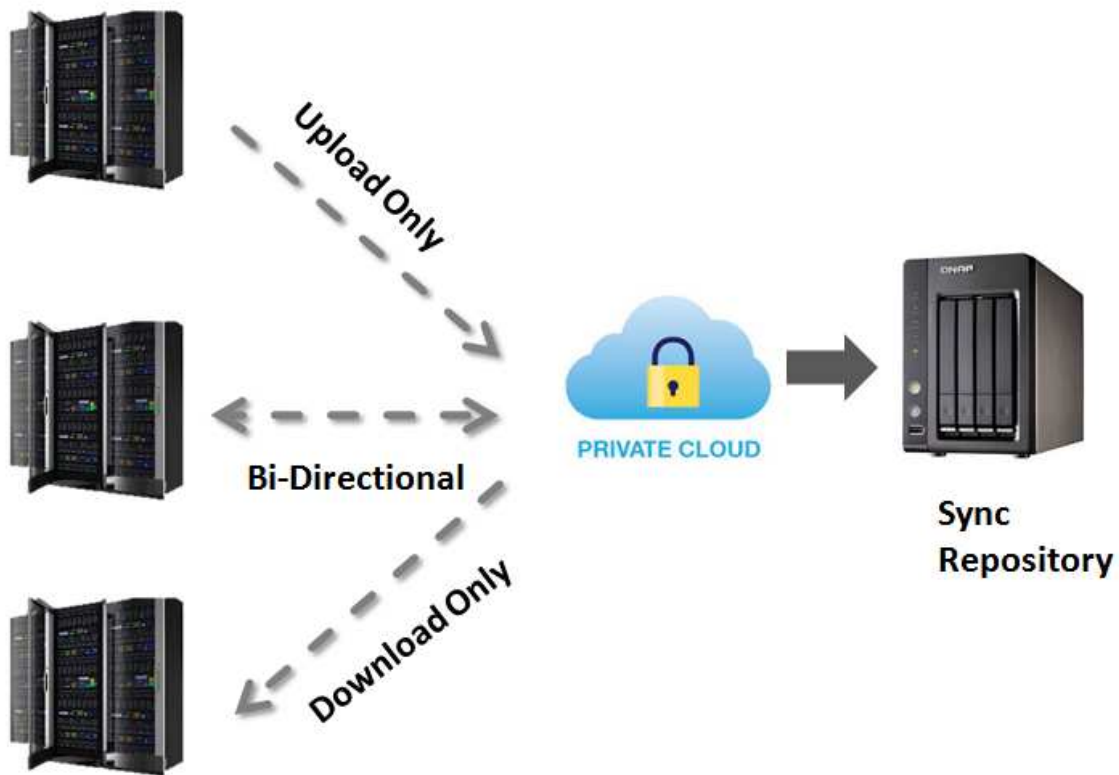
- Online Backup Only: data is transmitted and saved to private cloud storage enabled by RingStor
- Local Backup Only: data is backed up to local storage only
- Local Backup + Replication: data is backed to local storage first, then replicated offsite to the remote storage, as shown in picture below.



Data Sync

RingStor Enterprise provides three different sync modes for files across all agents:

- Bi-Directional: data is synced in both ways, most recent copies are kept in all agents
- Upload Only: most recent data is uploaded to sync repository in cloud
- Download Only: Download from sync repository only



RingStor Cloud Structure

RingStor Enterprise comes with two sets of components: Cloud and DataAgents.

Cloud - the cloud component consists of a Cloud End Point, Cloud Indexer, one or more DataServers and MountPaths as storage to provide server-side support for data management.

DataAgent - a software service running on computers where application data requires protection. Data management features supported in 3.0 are:

File Backup

File Sync

Bare Metal Backup

SQL Database Backup

MySQL Database Backup

Microsoft Exchange Backup

Microsoft Exchange Mailbox Backup

Microsoft Office 365 Mailbox Backup

VMware Virtual Machine Backup

Windows Hyper-V Backup

An example of RingStor configuration is illustrated below:

