

- Cloud:
 - Cloud End Point: cloud access point, installed first
 - Cloud Indexer: indexing program, installed second
 - DataServer: backup and restore server, at least one is required

- DataAgent – agent program that runs on end user machine

- RingStor Explorer – a Windows desktop UI



RingStor Cloud

Cloud End Point - Windows OS, .net framework 3.5, MS SQL or SQL Express
min 2GB mem, 2 CPU

Cloud Indexer - Windows OS, .net framework 3.5, min 2GB mem, 2CPU

DataServer - Windows OS, .net framework 3.5, min 4GB mem, 2CPU

RingStor Cloud on one box:

Windows OS, .net framework 3.5, MS SQL or SQL Express, min 8GB mem, 2 CPU

DataAgent

Windows DataAgent - .net framework 3.5, min 1GB mem

Linux DataAgent - min 1GB mem

ChromeOS DataAgent - min 1GB mem

Mac - Mac OS X 10

Microsoft SQL or SQL Express

Required for Cloud End Point

Download free SQL Express from Microsoft:

<http://www.microsoft.com/en-us/download/details.aspx?id=21844>

Microsoft .net framework 3.5 (free to download)

Required for all components on Windows

If not installed on Windows already, download from Microsoft:

<http://www.microsoft.com/en-us/download/details.aspx?id=21>

Oracle JRE 1.8 or higher (free to download)

Required for all components on Linux/Mac/Chromebooks

If not installed on Linux/Mac/Chromebooks, download from Oracle:

<http://www.oracle.com/technetwork/java/javase/downloads/jre8-downloads-2133155.html>

Microsoft SQL sa Account:

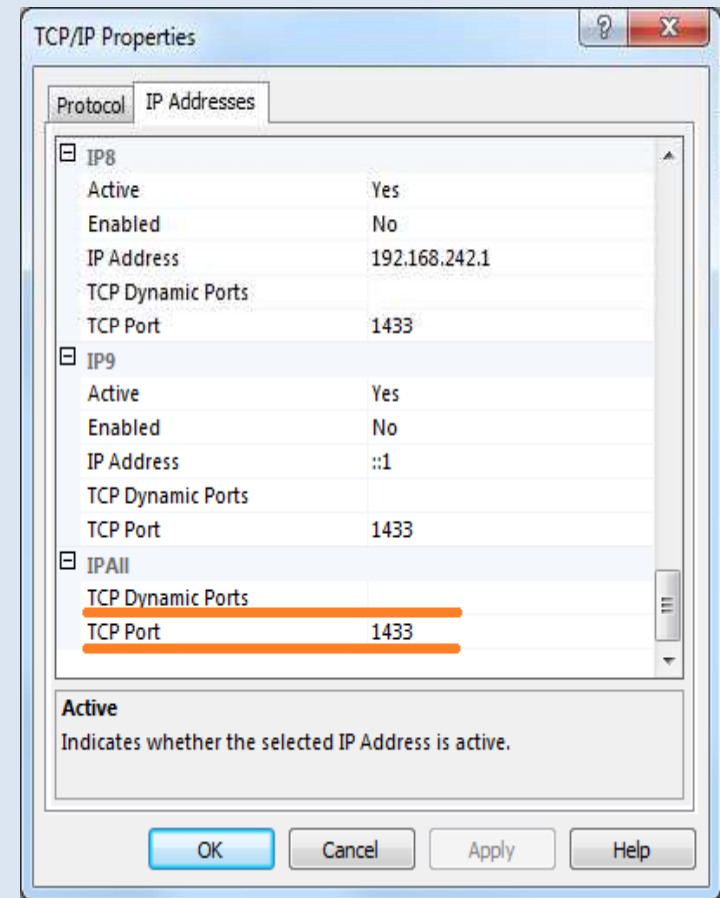
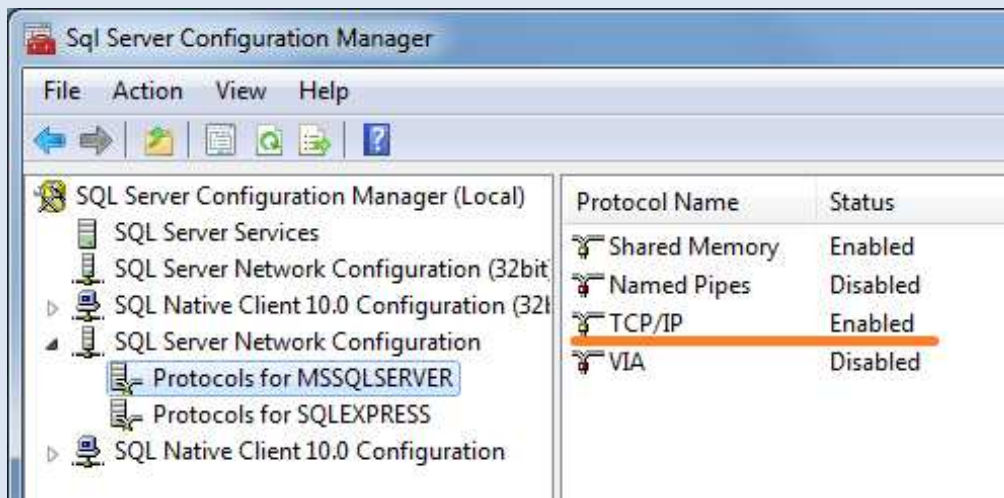
The sa account is needed to install Cloud End Point

Password: _____

Microsoft SQL server TCP/IP port:

The TCP/IP must be enabled, write down the port below:

SQL TCP/IP port: _____



Windows Service Account:

This service account will be used to run all cloud services, it must have permission to access cloud index path and MountPaths.

Domain: _____

Username: _____

Password: _____

Cloud Index Path

When install Cloud Indexer, the cloud index path must be provided as an UNC path accessible by the service account above

Cloud Index UNC Path: _____

First MountPath

When install first DataServer, the MountPath must be provided as an UNC path accessible by the service account above

MountPath UNC Path: _____

1. Install Cloud End Point

Select x64 bit or 32 bit installer to run

Create a cloud administrator account, write down its login credentials.

Provide SQL settings and service account.

2. Install Cloud Indexer

Select x64 bit or 32 bit installer to run

Connect to cloud end point and use cloud administrator account to install.

Provide cloud index path and service account

3. Install DataServer

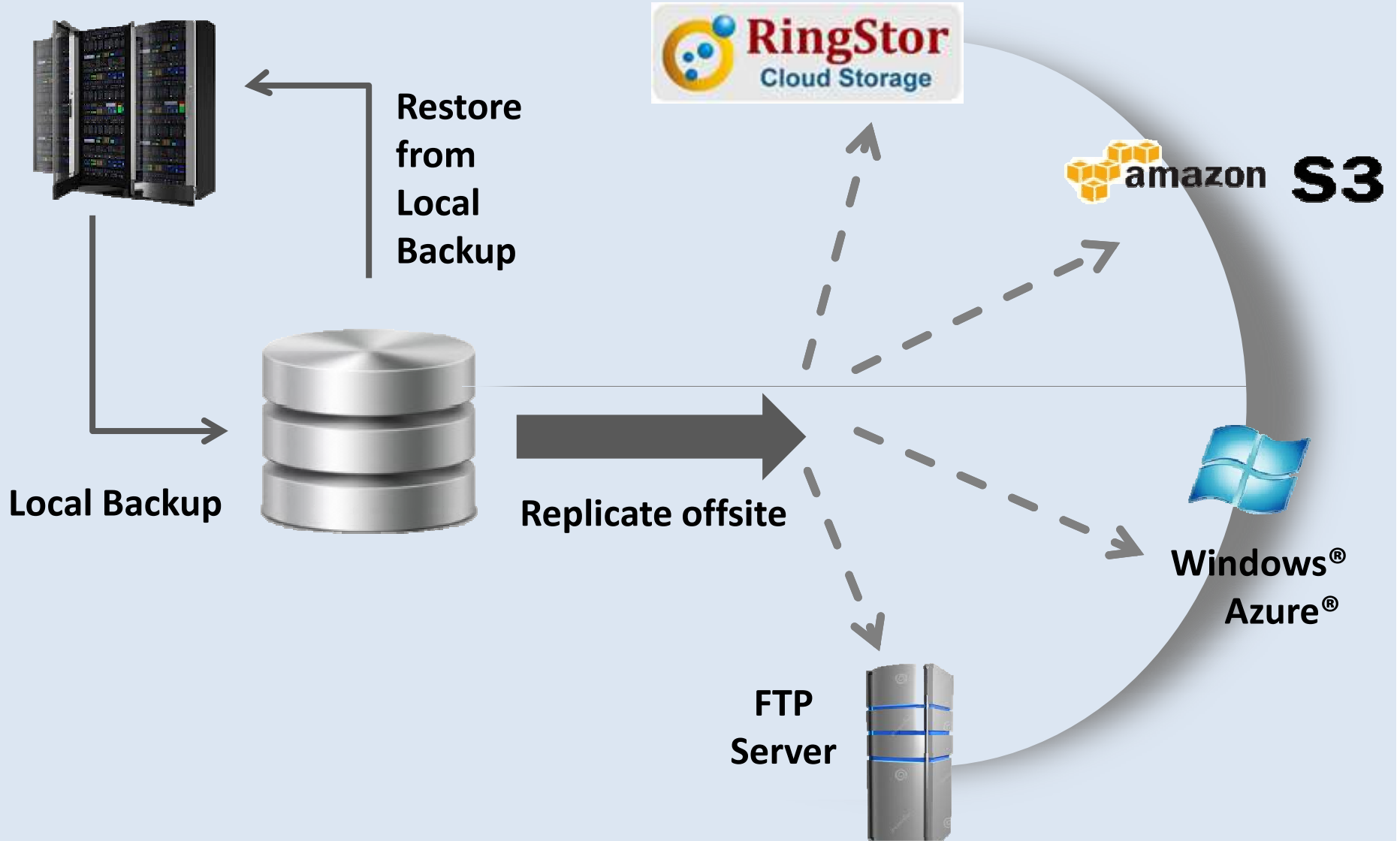
Select x64 bit or 32 bit installer to run

Connect to cloud end point and use cloud administrator account to install.

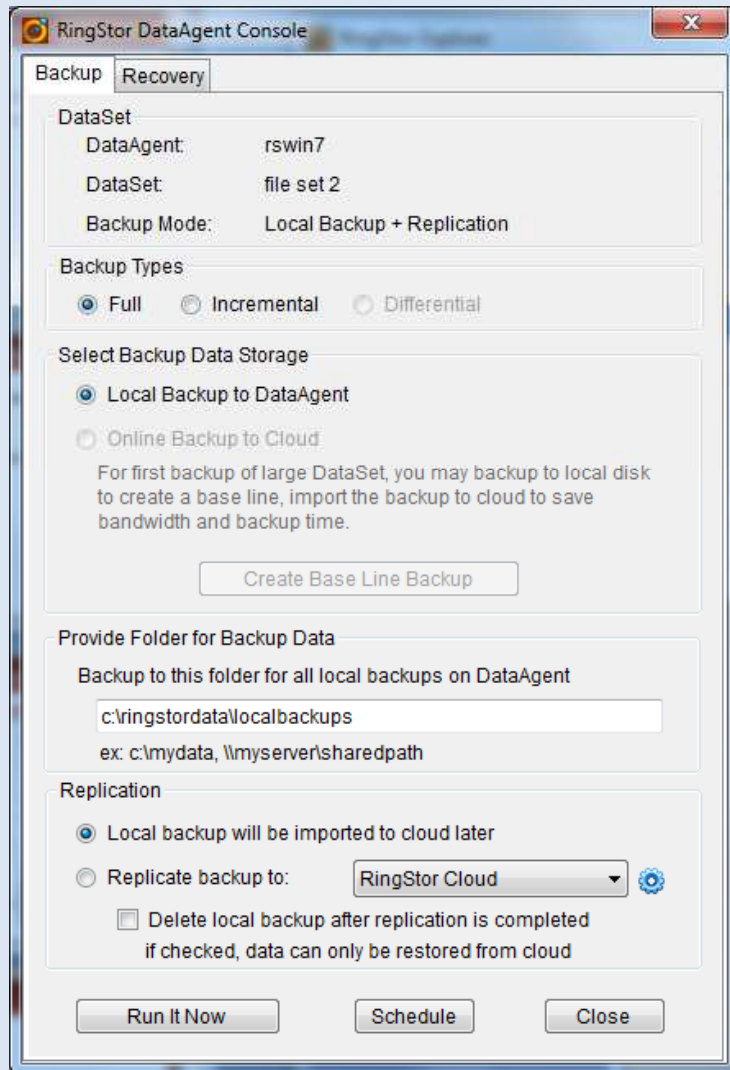
Provide MountPath and service account

4. Install RingStor Explorer

1. Select x64 bit or x32 bit DataAgent installer to run
2. Connect to cloud end point and provide valid user credentials to continue
3. Select types of backup for the DataAgent
4. Open RingStor Explorer, locate the DataAgent
5. Right click an agent to create DataSet
6. Schedule the backup



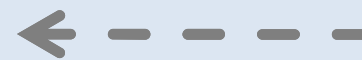
Manage Backup



The screenshot shows the 'RingStor DataAgent Console' window with the 'Backup' tab selected. The configuration is as follows:

- DataSet:** DataAgent: rswin7, DataSet: file set 2, Backup Mode: Local Backup + Replication
- Backup Types:** Full, Incremental, Differential
- Select Backup Data Storage:** Local Backup to DataAgent, Online Backup to Cloud. A note states: "For first backup of large DataSet, you may backup to local disk to create a base line, import the backup to cloud to save bandwidth and backup time." A button labeled "Create Base Line Backup" is present.
- Provide Folder for Backup Data:** Backup to this folder for all local backups on DataAgent. Text box contains "c:\ringstordata\localbackups" with an example "ex: c:\mydata, \myserver\sharedpath" below.
- Replication:** Local backup will be imported to cloud later, Replicate backup to: RingStor Cloud (with a gear icon). A checkbox "Delete local backup after replication is completed" is unchecked, with a note: "if checked, data can only be restored from cloud".

Buttons at the bottom: "Run It Now", "Schedule", "Close".



Backup Mode

Local Backup Storage

Remote Backup Storage

