

iDataStreams Backup User Manual

Version 2.1

Last Update on March 17th, 2014

RingStor, Inc.

197 Route 18 South, Ste 3000

East Brunswick, NJ 08816

Table of Contents

1	Overview	3
1.1	iDataStreams Data Protection	3
1.2	Backup Agents	3
1.2.1	File Backup	4
2	Installation	5
2.1	System Requirements	5
2.2	Install iDataStreams Backup	5
3	iDataStreams Backup Console	6
3.1	Data	7
3.2	Backup	11
3.3	Recover	12
3.4	Job Manager.....	13
3.5	Settings	14
3.6	Help.....	15
4	Task Scheduling	17
4.1	Introduction	17
5	System Administration	18
5.1	Job Manager	18
5.2	License Management	18

1 Overview

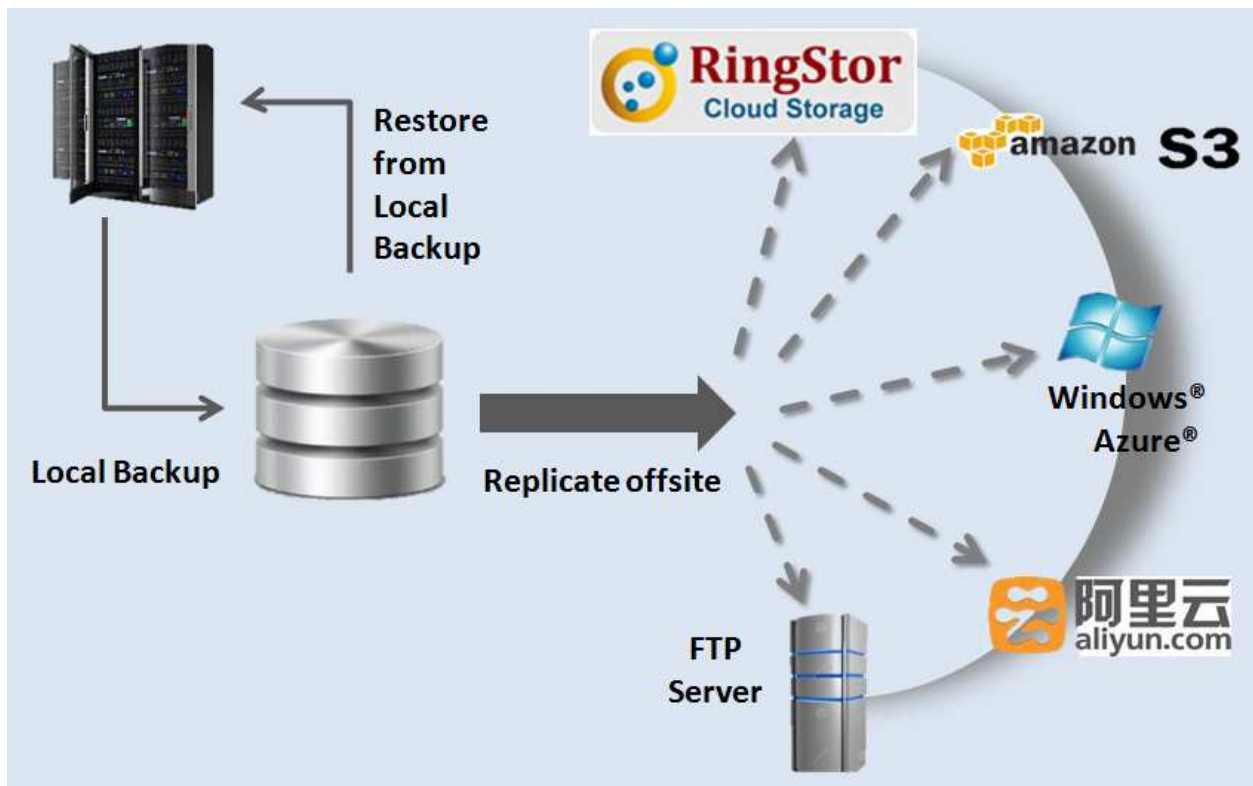
This user manual provides step by step instructions on how to install and manage iDataStreams Backup software, version 2.1. This document is also available on the web at <http://www.idatastreamsbackup.com>.

1.1 iDataStreams Data Protection

iDataStreams Backup software provides two different ways to backup the data: Local Backup and Offsite Replication.

Local Backup: data is backed up to local storage only

Offsite Replication: local backup is replicated offsite to the remote storage, as shown in picture below.



1.2 Backup Agents

iDataStreams is a suite of software installed on a computer whose application data requires protection. Each application data is supported by an Agent that provides backup service. Agent supported in release 2.1 is File Backup.

1.2.1 File Backup

A File Backup agent can maintain multiple copies at different point of time for same file. File Backup can run in form of one or more full backup, with a number of incremental backups. Files protected under File Backup can be restored to a point of time selected by user.

2 Installation

2.1 System Requirements

iDataStreams Backup can be installed on following platforms:

- Microsoft Windows XP/Vista/7/2003/2003 R2/2008/2008 R2/8/2012

The following third party software must be installed prior to iDataStreams installation:

Windows: Microsoft .NET Framework 3.5 is required. You may download .NET framework from microsoft.com at <http://www.microsoft.com/en-us/download/details.aspx?id=21>

2.2 Install iDataStreams Backup

Download proper version of the installation executable from <http://www.idatastreams.com>. Run the downloaded executable on the computer to install the software.

3 iDataStreams Backup Console

Upon install, a systray icon is created for iDataStreams, right click the icon and click Open Console to start iDataStreams Backup Console.

iDataStreams Backup Console is a graphic user interface (GUI) to access and manage backup and restore. In this interface, user can perform following functions:

- View/Manage DataSets
- View/Manage Schedules
- View/Manage Tasks
- View/Manage License

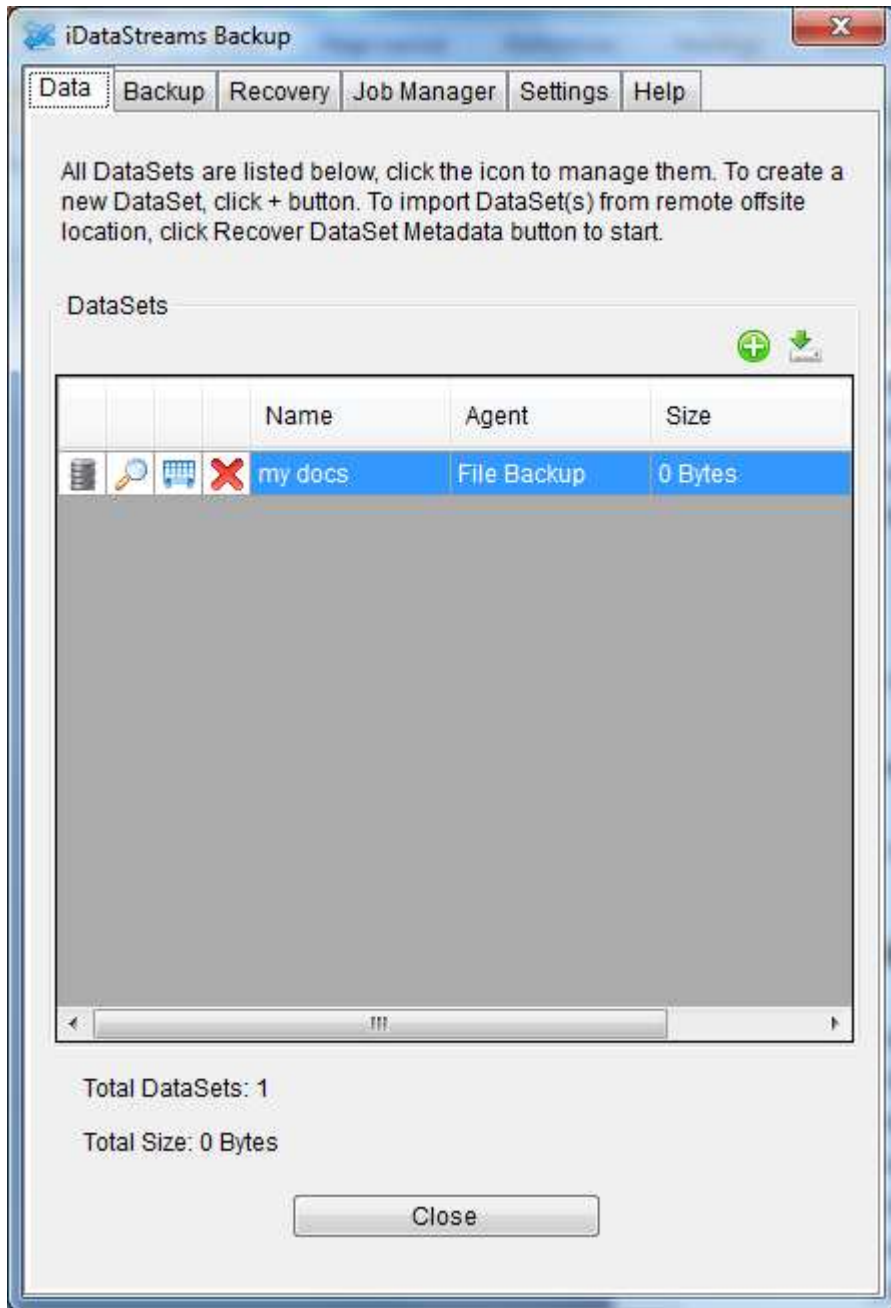


Figure 3.1 iDataStreams Backup Console

The chapter will provide an overview of this GUI.

3.1 Data

Data tab manages DataSets.

DataSet is a collection of application data on iDataStreams that require protection. DataSet's protection scheme

is supported by its associated Agent explained above.

Creation of a DataSet is the first step to implement data protection plan in iDataStreams. You may start **New DataSet Wizard** by clicking + green icon:

New DataSet Wizard

Step 1 – Name the DataSet

Create New DataSet

Name the DataSet and provide optional description

Name
backup dataset 1

Description
write some description here

Note that the Next button is disabled until you type the name above.

Back Next Cancel

Provide a friendly name for the DataSet.

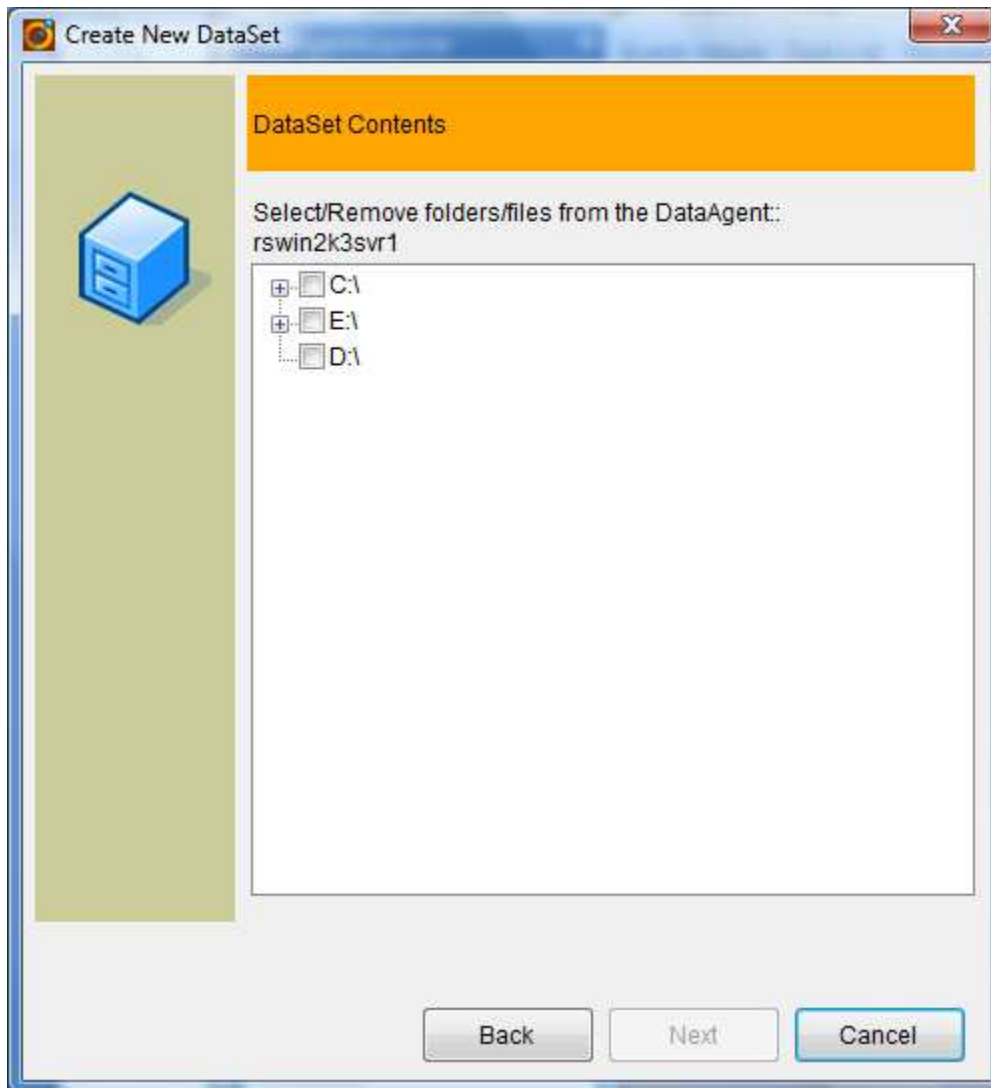
Provide optional description for the DataSet.

Click Next to continue.

Step 2 – Depending on DataSet selected, specify contents for the DataSet

File Backup DataSet

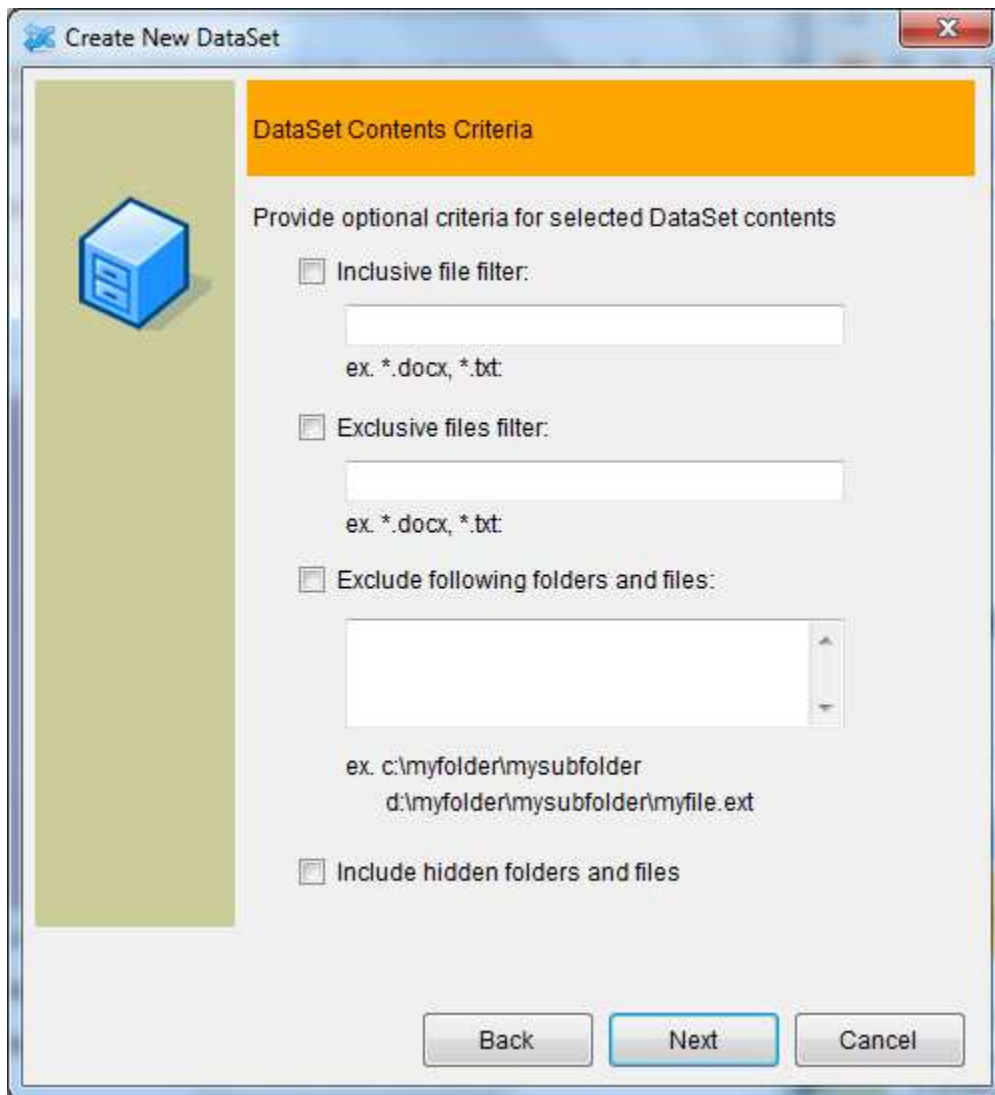
Step 2.1 – Select Files/Folders



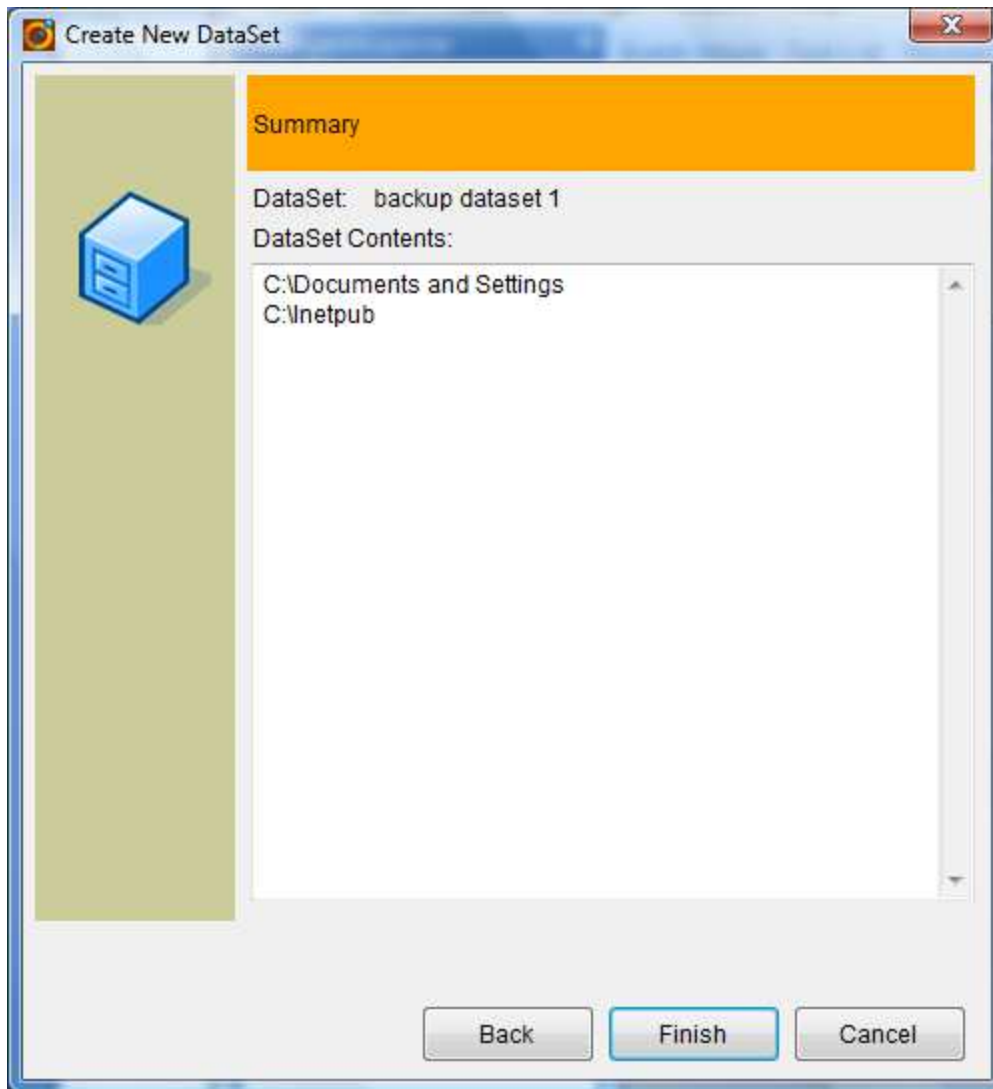
For File Backup agents, select folders and/or files on the computer.

Selected folders and/or files are DataSet's contents. All data in contents will be protected and thus can be recovered.

Step 3 – Provide optional filters



Final Step – Summary

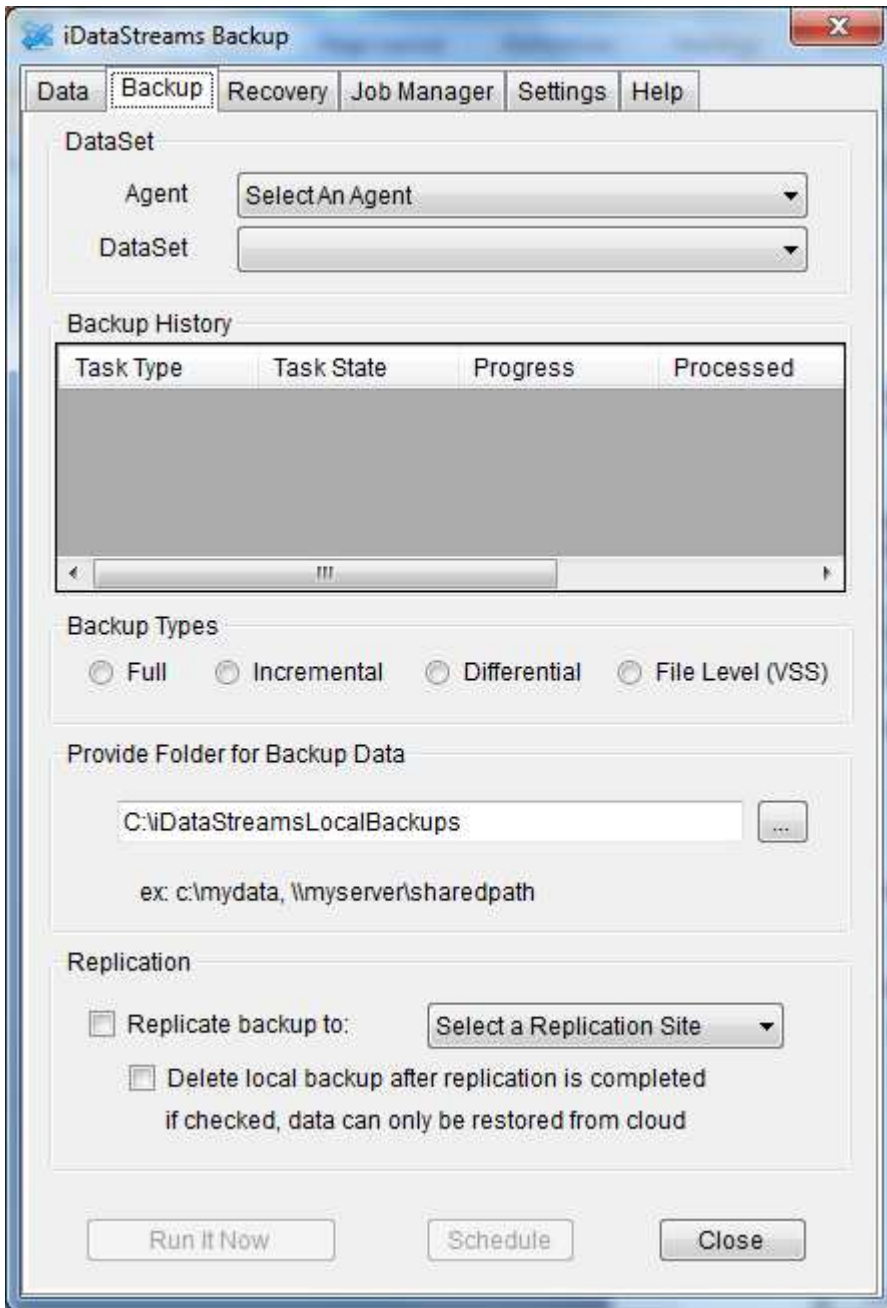


Verify DataSet's name and contents, click Back to make modifications, click Finish to create this DataSet. After creation, a pop up message will be displayed.

3.2 Backup

Backup tab manages on-demand or scheduled backup.

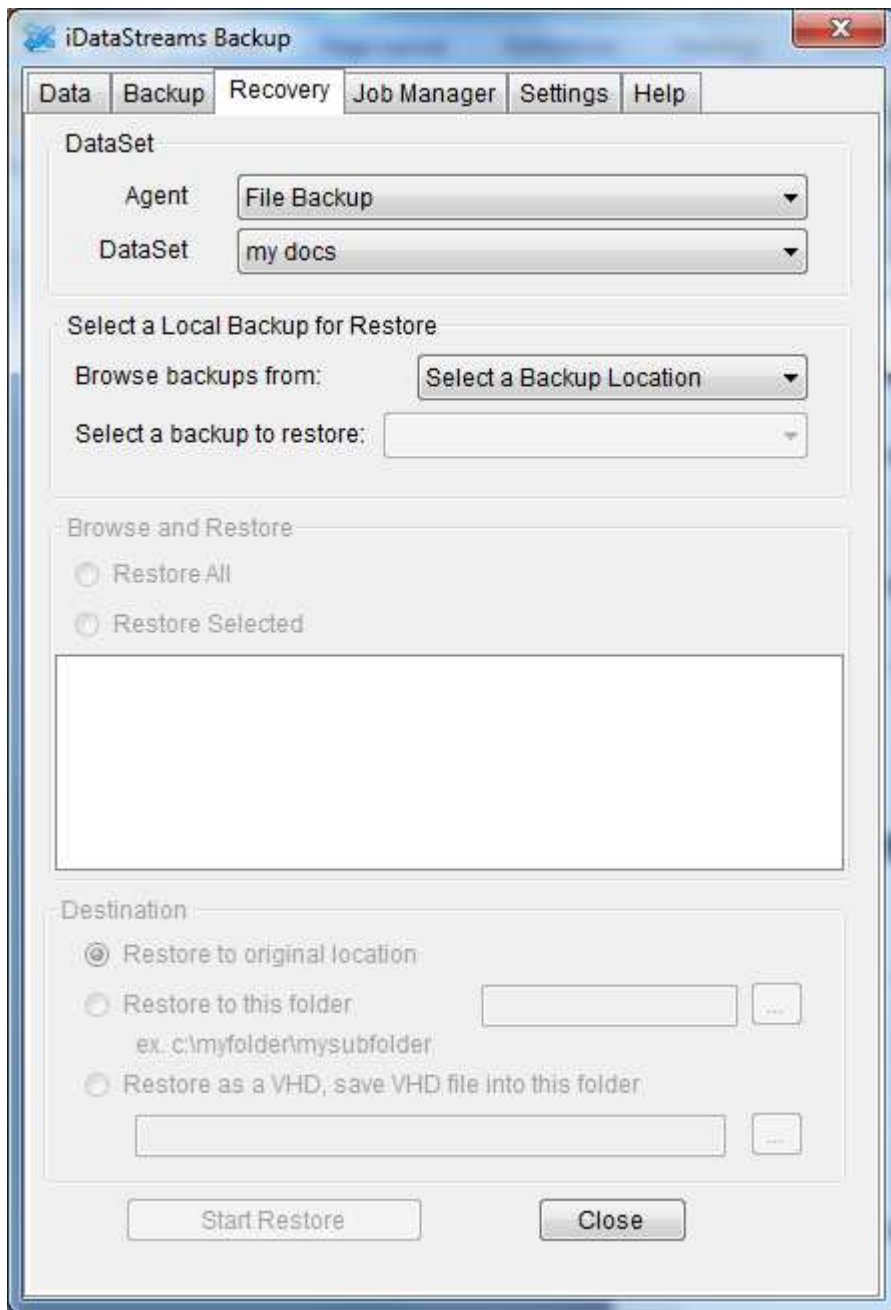
iDataStreams provides various ways to backup the data, backup to local disk, backup to selected public cloud storage, ex. Amazon S3.



3.3 Recover

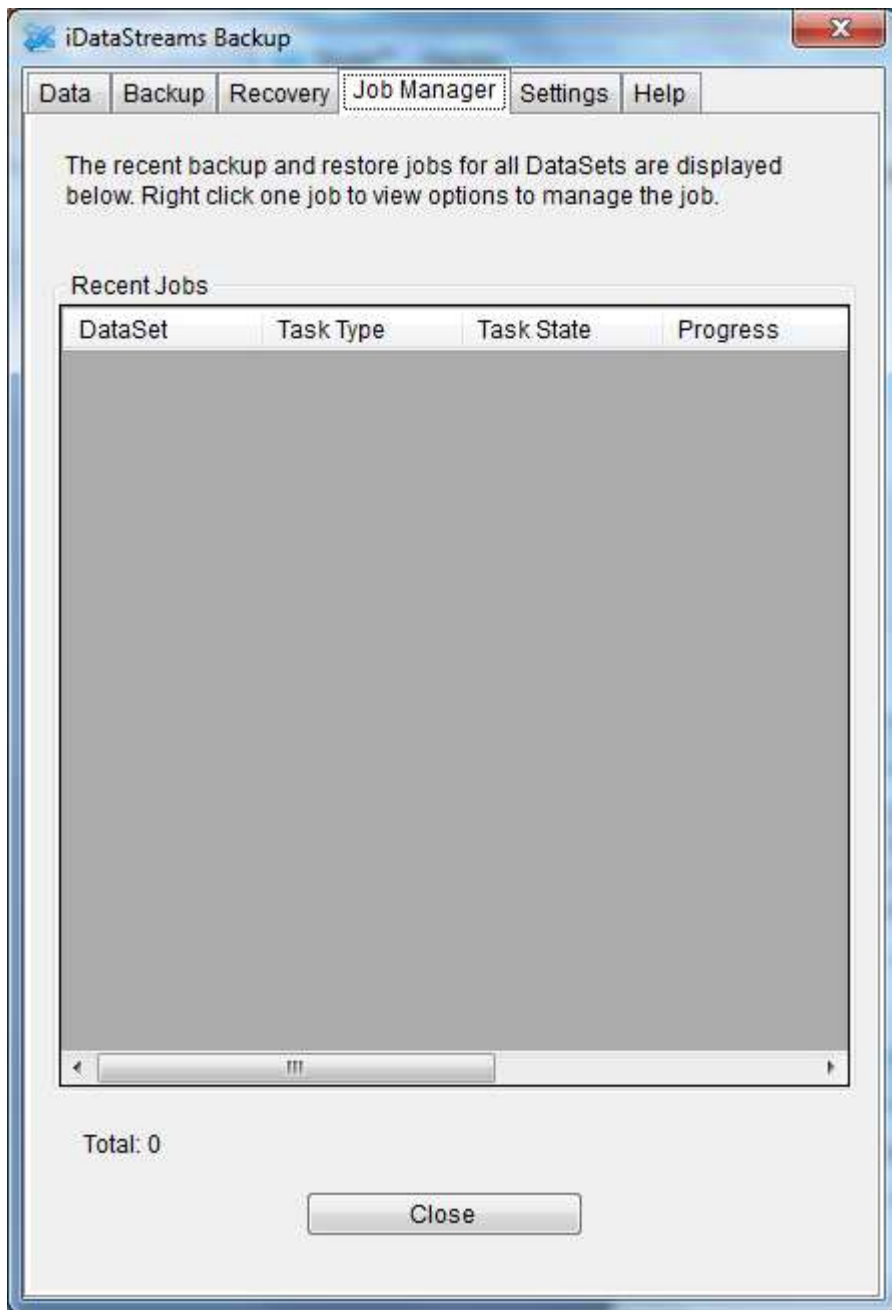
Recover tab manages data restore.

Data protected by iDataStreams can be recovered from Recover tab.



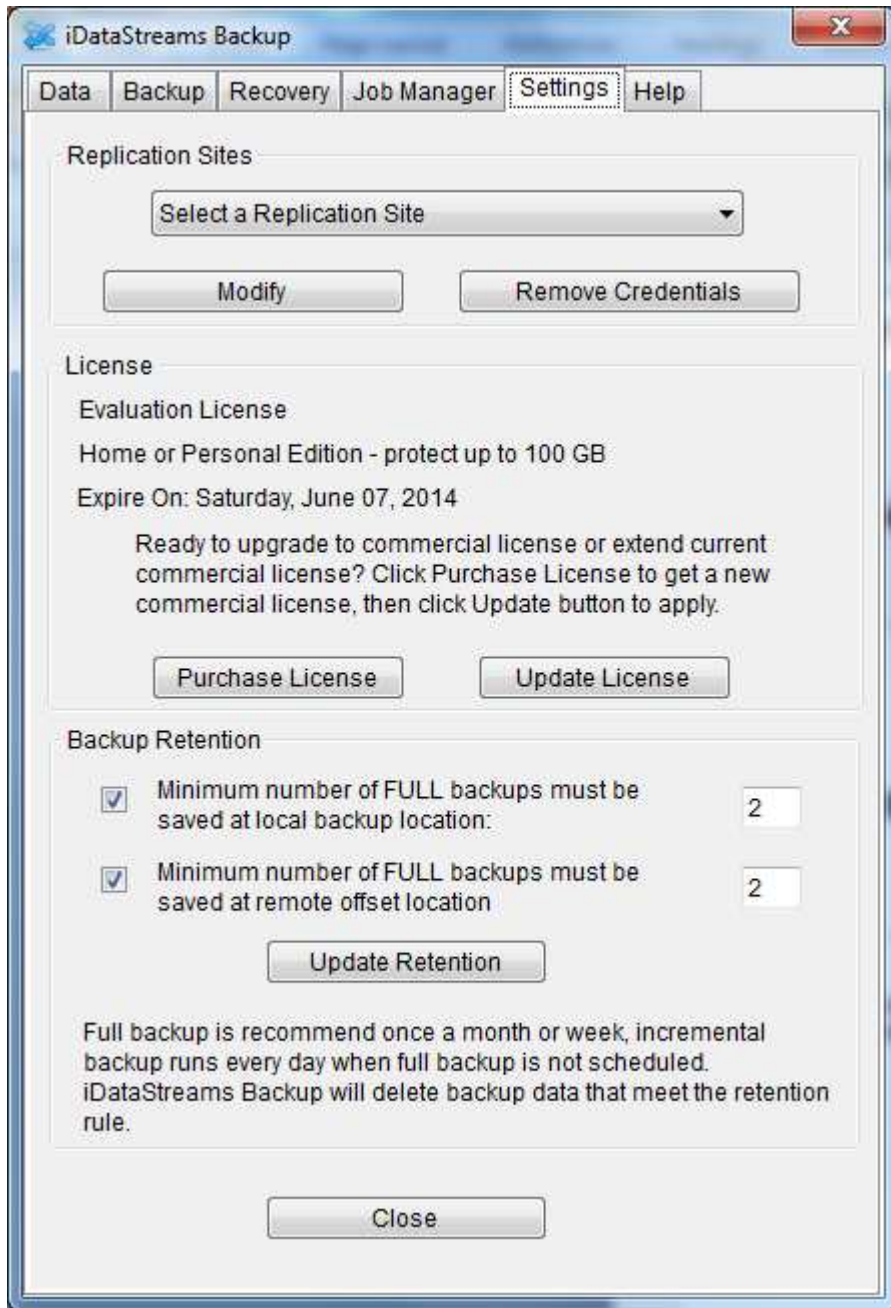
3.4 Job Manager

Job Manager tab is used to view and manage running backup and restore tasks.



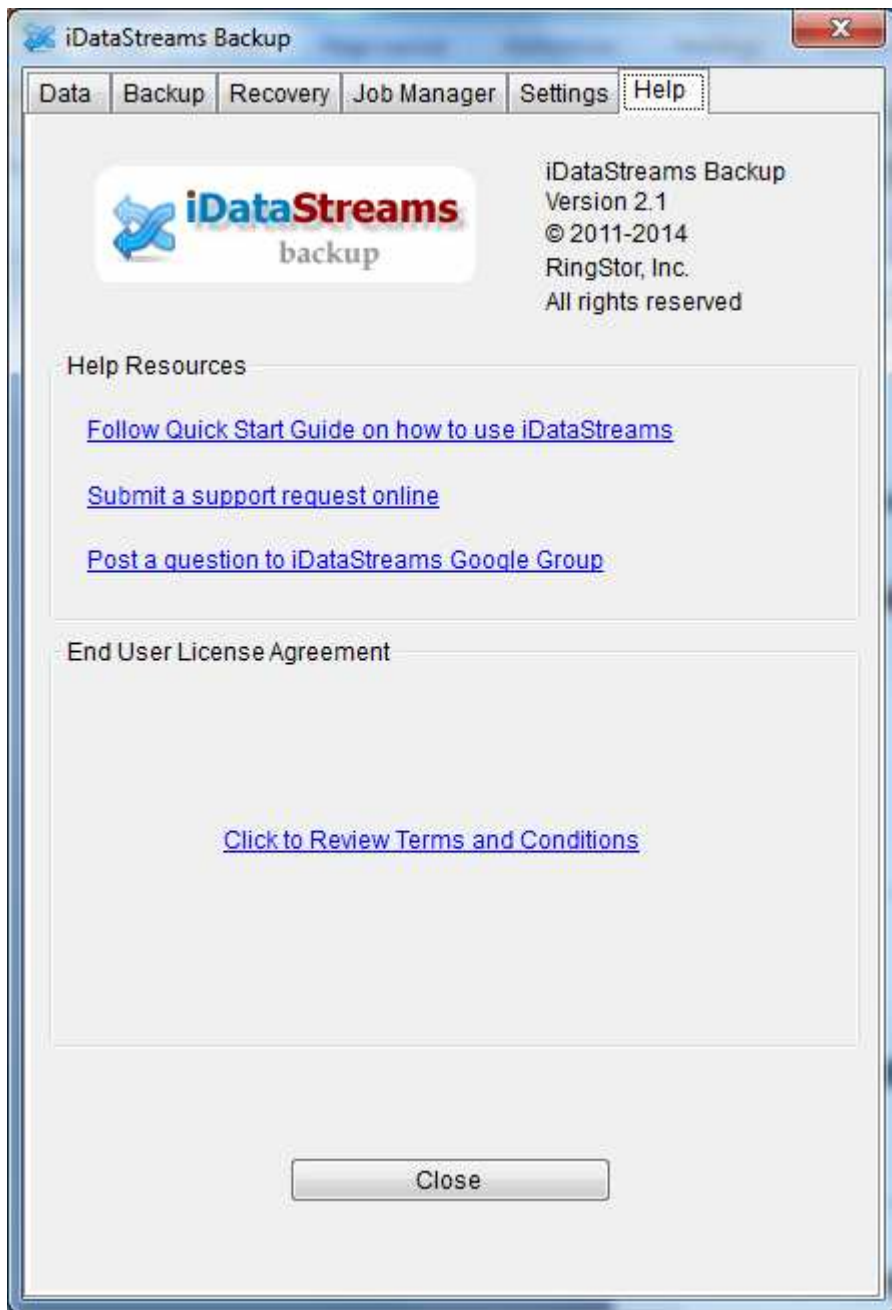
3.5 Settings

Settings tab provides ways to manage replication sites, license and retention.



3.6 Help

Help tab provides links to online help and online license terms and agreements.



4 Task Scheduling

4.1 Introduction

Task is the action to transmit data within iDataStreams.

iDataStreams supports various types of task:

- Backup – to provide data protection for File Backup agent

Scheduling a task is a series of steps managed by click Schedule button on Backup tab.

The screenshot shows a 'Schedule' dialog box with the following fields and options:

- General** (selected tab) | Pre and Post Scripts
- Basic Info**
 - Name:
 - Notes:
- Schedule**
 - Day(s): Mon Tue Wed Thu Fri Sat Sun
 - Time: :
 - End Date: Never end End on:
- Buttons:

5 System Administration

5.1 Job Manager

Current tasks are displayed and can be managed in Job Manager tab.

Depending on the state of the task, you may manage task by

Resume – resume a task that is either suspended or in wait state

Suspend – suspend a task that is either running or in wait state

Kill – kill a task

Each task goes through different state. Following tables list the possible states:

Scanning – task is scanning files and folders

Running – task is transmitting data

Assembling – task is assembling data blocks into application data

Suspended – task is suspended by user, stop running

Killed – task is killed by user

Failed – task failed

5.2 License Management

License must be valid for iDataStreams to start successfully. If license is invalid or expired, all backups are disabled.

Settings table shows current license info and usage.

To purchase a commercial license, click “Purchase License” to start.